

# envelope-style matchbox template

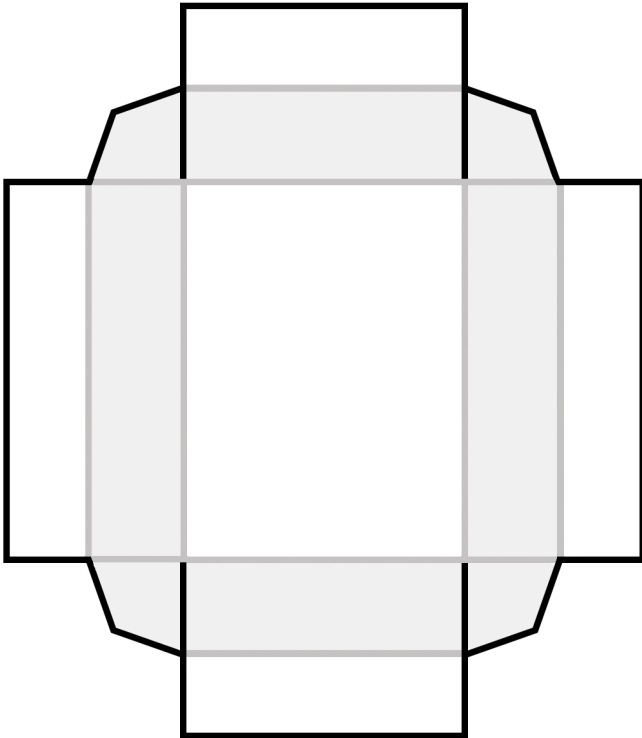
32-count size

created by Rachel Johnson • [rachel@swap-bot.com](mailto:rachel@swap-bot.com) • [www.rljart.com](http://www.rljart.com)

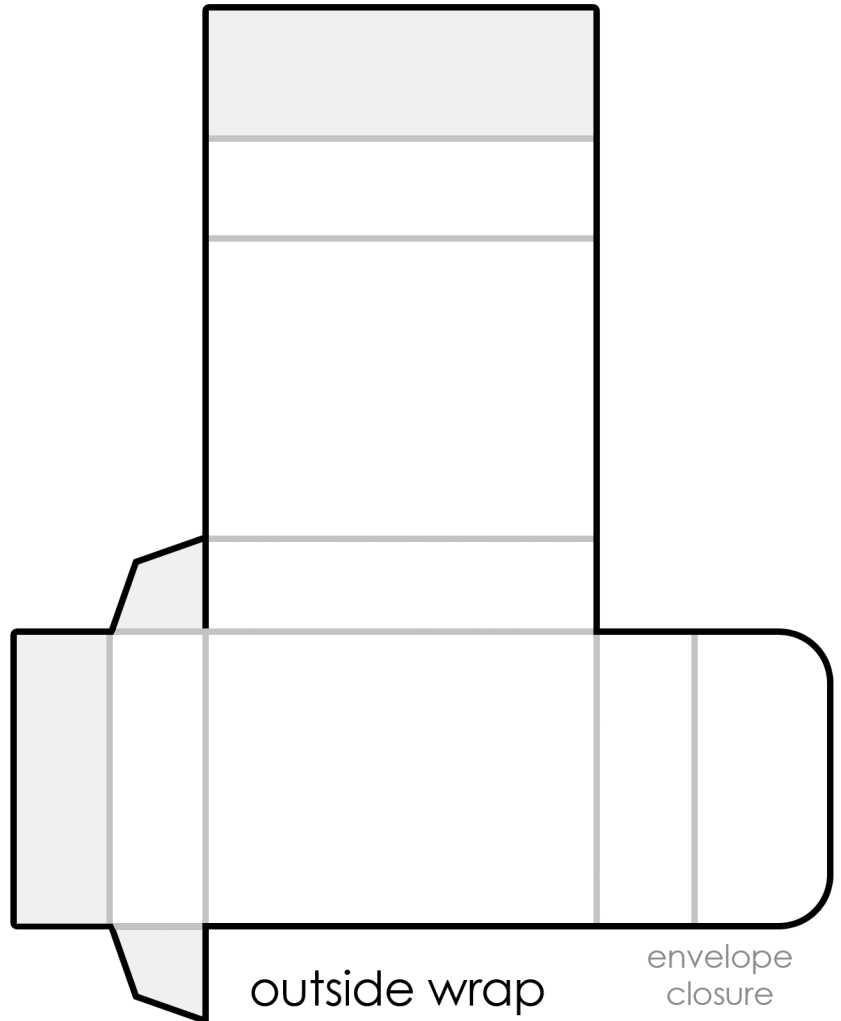
black lines = cut

grey lines = fold

grey areas = spread glue



inside drawer



outside wrap

envelope  
closure

## Instructions:

1. Print out template on cardstock at 100%. Do not "fit to paper size" or your matchbox will not be the correct size.
2. Cut along all black lines; score and fold along all grey lines.
3. Apply glue to the light grey areas of the inside drawer.
4. Fold the sides of the inside drawer in on themselves (they will end up being double thick) while tucking the tabs into the folds of the shorter sides of the drawer.
5. Fold the outside wrap around the inside drawer while folding in its bottom and tucking in the tabs. (This fold is a little tricky as you must tuck in the final side.) Glue it in place.
6. The flap on the right side of the outside wrap is the matchbox's envelope closure. Fold it over the top of the box and secure it with a seal or ribbon.
7. Decorate your matchbox!