

# envelope-style matchbox template

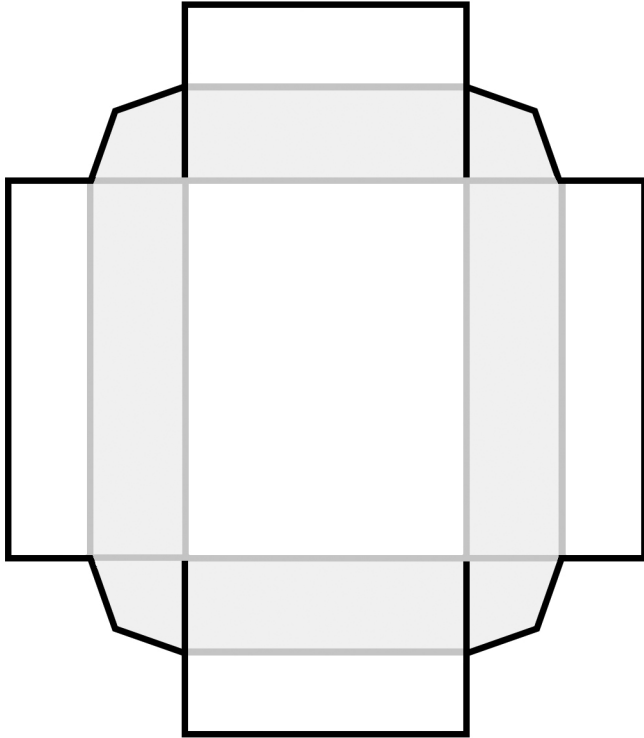
32-count size • 2 x 1.5 x .5 inches

created by Rachel Johnson • [rachel@swap-bot.com](mailto:rachel@swap-bot.com) • [www.rljart.com](http://www.rljart.com)

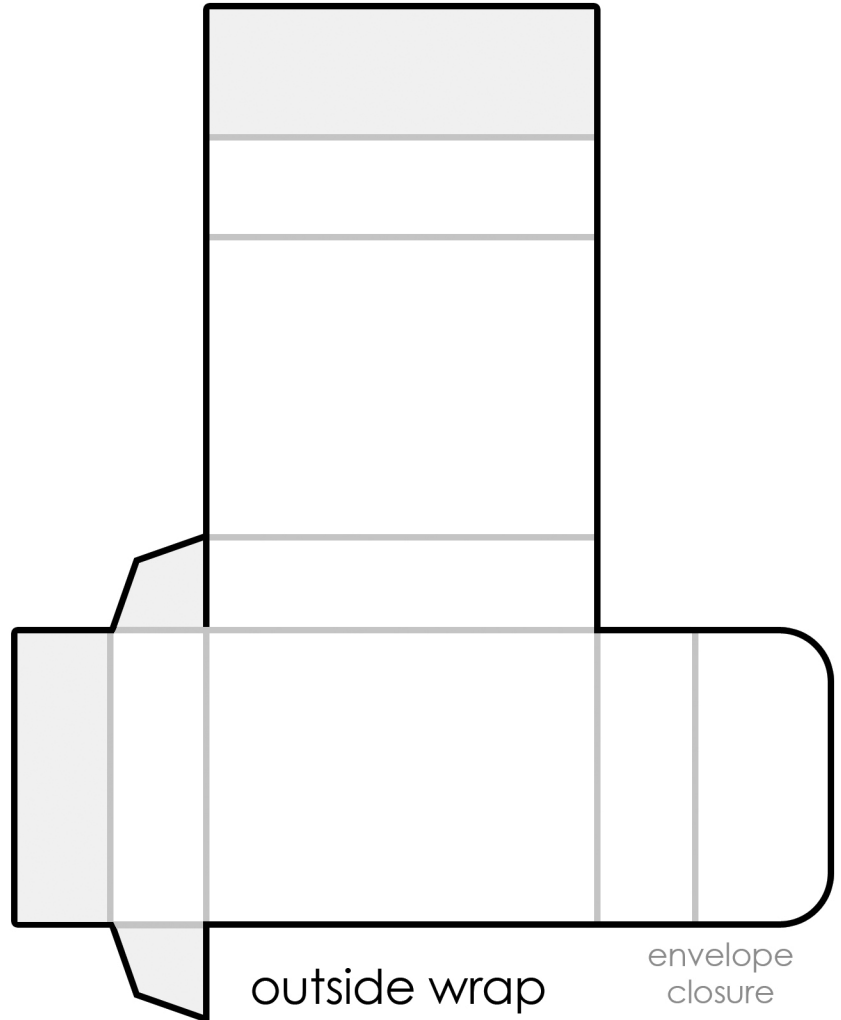
black lines = cut

grey lines = fold

grey areas = spread glue



inside drawer



outside wrap

envelope  
closure

## Instructions:

1. Cut along all black lines; score and fold along all grey lines.
2. Apply glue to the light grey areas of the inside drawer.
3. Fold the sides of the inside drawer in on themselves (they will be end up being double thick) while tucking the tabs into the folds of the shorter sides of the drawer.
4. Fold the outside wrap around the inside drawer to ensure that it is folded to the correct size.
5. Next, remove inner drawer and fold in the outside wrap's bottom and tuck in the tabs. (This fold is a little tricky as you must tuck in the final side.) Glue outside wrap in place.
6. The flap on the right side of the outside wrap is the matchbox's envelope closure. With the inner drawer slid back inside the wrap, fold the envelope flap over the top of the box and secure it with a seal or ribbon.
7. Decorate your matchbox! (Then... swap your creations on **Swap-bot.com!**)