

matchbox template

32-count size • 2 x 1.5 x .5 inches

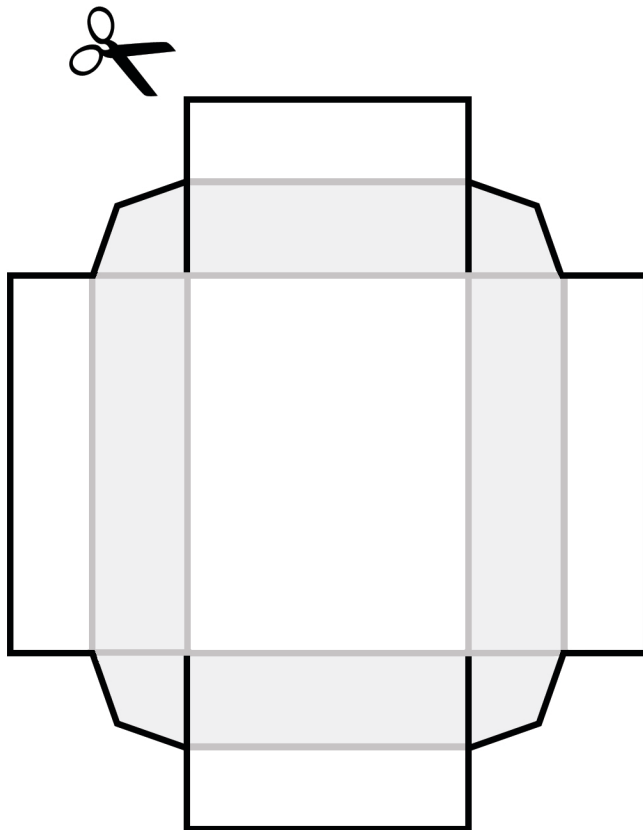
created by Rachel Johnson

rachel@swap-bot.com • www.swap-bot.com • www.rljart.com

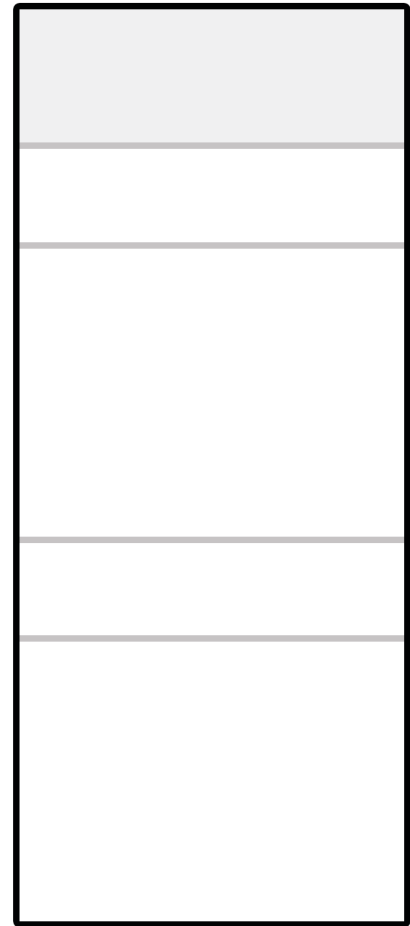
black lines = cut

grey lines = fold

grey areas = spread glue



inside drawer



outside wrap

Instructions:

1. Cut along all black lines; score and fold along all grey lines.
2. Apply glue to the light grey areas of the inside drawer.
3. Fold the sides of the inside drawer in on themselves (they will be end up being double thick) while tucking the tabs into the folds of the shorter sides of the drawer.
4. Fold the outside wrap around the inside drawer to test the size, then glue it in place.
5. Decorate your matchbox!

Optional (but super-fun) step: Swap your matchboxes on Swap-bot.com!! :)